

## UTILITY, PROPANE, NATURAL GAS & WATER SHUT OFF

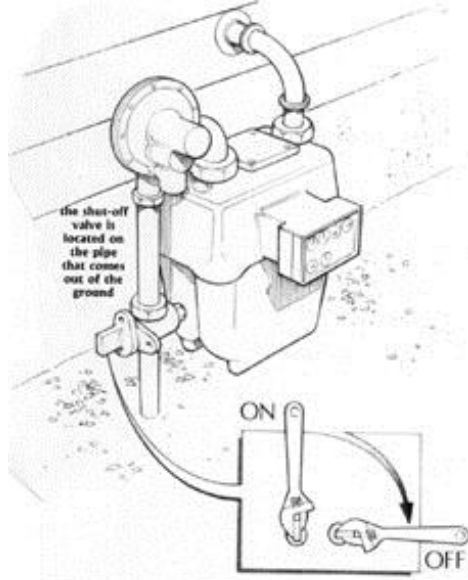
Natural gas has proven to be very dangerous in the aftermath of earthquakes and other disasters. Leaks and explosions can cause major fires. A propane leak into your home can also be very dangerous. It is imperative that you know the location of your shut off valves to your electrical circuit panel and your electricity main shut off. Familiarize yourself with these and how to shut them off. BE VERY CAREFUL while learning about how to shut these off in your own home, especially natural gas or propane.

### PRACTICING TURNING OFF NATURAL GAS:

1. Locate your shut off valve. Use a large adjustable wrench and adjust it to fit the valve on your meter. **KEEP THIS WRENCH AT THE METER!!**
2. To SHUT OFF, turn the valve 90°, or ¼ turn, so that it crosses the pipe. **NEVER EVER USE WD-40™** to lubricate a stuck valve. It can disintegrate the o-rings, which can cause a leak.
3. You can move the valve ever so slightly back and forth to loosen rust or paint that may be causing it to stick, no more than 1/8 turn, to practice. If this is not possible to turn, call your gas company to come and fix or replace the valve.
4. *CAUTION – If you accidentally turn off the gas while practicing, you must call a qualified gas representative to come and turn it back on. Turning it on yourself can create a gas leak in your home.*

### TURNING OFF NATURAL GAS AFTER A DISASTER:

1. If you should smell the gas odor, or hear a hissing sound, or if your meter dials are spinning more quickly than normal, then **TURN OFF THE GAS IMMEDIATELY!!**
2. Evacuate everyone from the home and open doors and windows to ventilate. If there is ANY possibility of a leak, **DO NOT** use matches, lighters, candles, anything with an open flame, or turn on or off any electrical switches.
3. Shut off your power at the main, since any switch (including an appliance such as a refrigerator switching on) could cause an explosion. Do not use a battery-powered flashlight. Chemical glow sticks can be safely used for light.



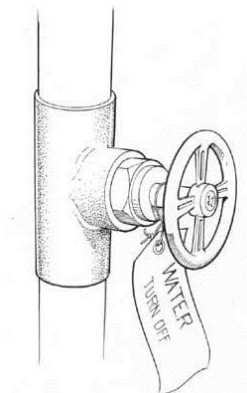
The shut off valve is located on the pipe that comes out of the ground.

## **SHUTTING OFF YOUR PROPANE TANK:**

1. Locate the valve on your propane tank. It could be similar to the valve on a natural gas service, or it may be similar to a water valve.
2. If you need an adjustable wrench to shut off your propane, store one near the tank.
3. If you accidentally shut it off while practicing, you may need to call the gas company to come and relight your pilot lights, so be careful.
4. The same cautions apply as the Natural Gas shut-off.

## **SHUTTING OFF YOUR WATER SUPPLY:**

1. Locate the shut off valve in your home – this will be where the water enters your home from the public water supply or from your well.
2. The valve usually has a handle to shut it off. Practice turning this so you know how to turn the water off at the house.
3. Locate your water meter (at the street, or in the sidewalk). Call the water company if you can't find it. Water can also be turned off at the meter, which may have a similar type of valve as natural gas. Special wrenches can be purchased at most hardware stores for certain types of water meter valves.
4. Make sure all members of the family know how to turn this off, label it also.



## **SHUTTING OFF YOUR ELECTRICITY:**

1. Locate your circuit breaker or fuse panel. Some circuit breaker panels have a MAIN shut off switch inside the panel. Some main shut offs are located separately, near where the electricity enters the house.
2. If you have a fuse panel (in older homes that have not been updated), you will have either a fuse labeled "Main" or a knife handle switch to turn off the panel.
3. If you have a main shut off inside your circuit panel, shut off all minor circuit breakers first, before shutting off the main.
4. If your home has any sub-panels, locate them and learn how to shut them off too.
5. In the event of a disaster or if you are forced to evacuate and time allows, shut off your electrical main and all sub-panels.

*This information and the other information that is provided on the website [www.getemergencyprepared.com](http://www.getemergencyprepared.com) does not in any way guarantee or promise your safety or survival in any disaster or situation. This is for informational purposes only and is to be used at the discretion of the individual, family, or group that is using it. Not all information or suggestions apply to all people and / or situations and people are encouraged to use common sense in all situations.*

***This document may be reproduced and used by individuals and groups in order to prepare themselves to deal with emergencies and disasters and their aftermath. Permission granted by Get Emergency Prepared. [www.getemergencyprepared.com](http://www.getemergencyprepared.com).***